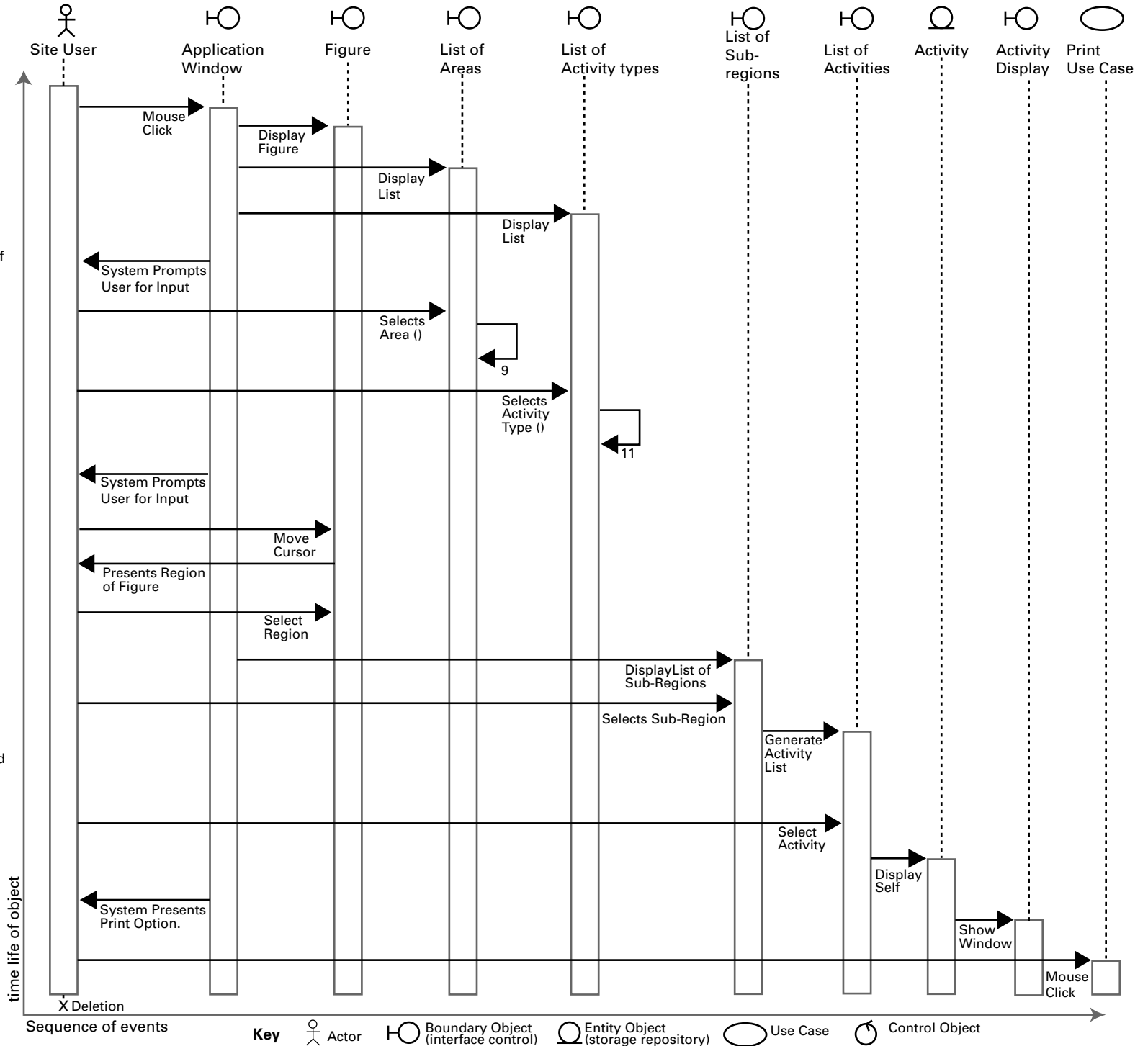


Training Application Sequence Diagram for Client
v 1.5 04/12/00

- 3 User selects figure.
- 4 System presents frontal view of selected figure.
- 5 System presents a list of areas of interest: exercise, stretch and injury.
- 6 System presents a list of activity types: running, cycling, walking, and all sports.
- 7 System prompts user to select an area of interest and (optionally) an activity type.
- 8 User selects an area of interest.
- 9 System acknowledges the user's area of interest selection.
- 10 User selects an activity type.
- 11 System acknowledges the user's activity type selection.
- 12 System prompts user to move cursor over figure.
- 13 User moves cursor over figure.
- 14 System identifies specified region of figure.
- 15 User selects a region.
- 16 System presents a list of sub-regions.
- 17 User selects sub-region.
- 18 System presents a list of activities associated with the selected sub-region, constrained by the area of interest selected in step 8 and the activity type selected in step 10.
- 19 User selects activity.
- 20 System presents information about activity.
- 21 System presents an option to print the activity.
- 22 If the user chooses to print the activity, invoke the Print Activity use case.



Sequence of events

Key

- Actor
- Boundary Object (interface control)
- Entity Object (storage repository)
- Use Case
- Control Object

Use Case: Training Application

Primary Scenario

- 1) User navigates to Training Application.
- 2) System presents two figures: male and female.
- 3) User selects figure.
- 4) System presents frontal view of selected figure.
- 5) System presents a list of areas of interest: exercise, stretch and injury.
- 6) System presents a list of activity types: running, cycling, walking, and all sports.
- 7) System prompts user to select an area of interest and (optionally) an activity type.
- 8) User selects an area of interest.
- 9) System acknowledges the user's area of interest selection.
- 10) User selects an activity type.
- 11) System acknowledges the user's activity type selection.
- 12) System prompts user to move cursor over figure.
- 13) User moves cursor over figure.
- 14) System identifies specified region of figure.
- 15) User selects a region.
- 16) System presents a list of sub-regions.
- 17) User selects a sub-region.
- 18) System presents a list of activities associated with the selected sub-region, constrained by the area of interest selected in step 8 and the activity type selected in step 10.
- 19) User selects an activity.
- 20) System presents detailed information about the selected activity.
- 21) System presents an option to print the activity.
- 22) If the user chooses to print the activity, invoke the Print Activity use case.

At step 5 one and only one area of interest will always be selected. The default will be Exercise.

If user doesn't pick an activity type at step 10, then at step 18 system presents all topics associated with selected region.